

Toll Free : 1800 123 8911



*lets grow together*

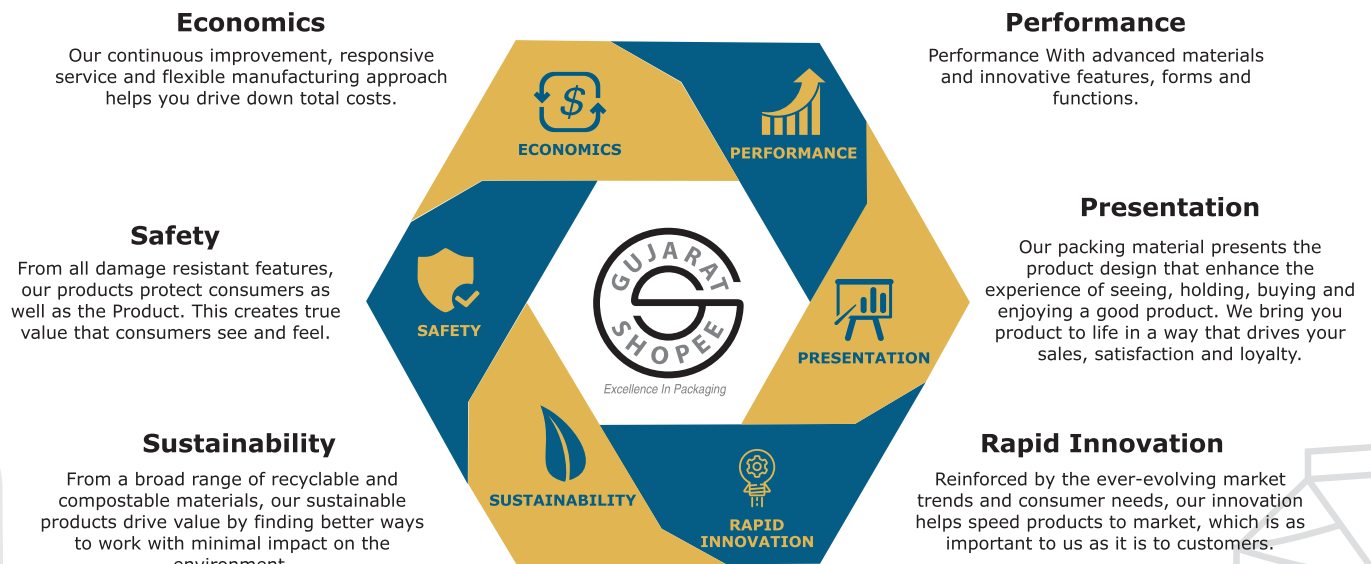


*"Serving All Packaging Needs Under One Roof"*

**Gujarat Shopee** is the well known brand of Gujarat Packaging Industries. We are one of the largest manufacturer of Corrugated Boxes, Rolls & Sheets since 2006.

For Our valuable customers we are upcoming with a vast range of all packaging materials. With dedicated and knowledgeable service teams, we work with our customer partners to combine deep insights about Packaging and consumer trends with fast and flexible manufacturing to drive higher levels of responsiveness and value with our highly equipped product testing laboratory.

Our proven process infuses rapid innovation at every level that encompass all six areas of packaging value :



## CORE VALUE

  
**Quality Assurance**

  
**Customer Satisfaction**

  
**Ethical Business**



### VISION

Company is driven by its commitment of Quality.



### MISSION

Aim to be Global Leader in Packaging Industries.

## NETTED CHOCOLATE BOX TOP & BOTTOM WITH WINDOW



### Specifications :

**Paper :** Golden Laminated Paper

**GSM :** 350

**Shape :** Square & Rectangular

**No of Chocolate :** 06 pcs

12 pcs

16 pcs

24 pcs

## NETTED WHITE CHOCOLATE BOX TOP & BOTTOM WITH WINDOW

### Specifications :

**Paper :** White Duplex Paper

**GSM :** 350

**Shape :** Square & Rectangular

**No of Chocolate :** 06 pcs

12 pcs

16 pcs

24 pcs



## KRAFT CHOCOLATE BOX TOP & BOTTOM WITH WINDOW

### Specifications :

**Paper :** Kraft Paper

**GSM :** 350

**Shape :** Square & Rectangular

**No of Chocolate :** 01 pcs 02 pcs

04 pcs 06 pcs

09 pcs 12 pcs

24 pcs



## CURVE CAKE BOX

### Specifications :

**Paper** : Golden Laminated Paper  
Kraft Paper  
White Paper  
**GSM** : 350  
**Capacity** : 0.5 kg. 1 kg.  
2 kg.



## CAKE BOX WITH WINDOW OR HANDLE

### Specifications :

**Paper** : Golden Laminated Paper  
Kraft Paper  
White Paper  
**GSM** : 350  
**Capacity** : 0.5 kg. 1 kg.  
2 kg.



## PLUM CAKE BOX

### Specifications :

**Paper** : Golden Laminated Paper  
Kraft Paper  
White Paper  
**GSM** : 350  
**Capacity** : 250 Gm  
500 Gm





## GOLDEN CHOCOLATE BOX SIDE OPENING

### Specifications :

**Paper :** Golden Laminated Paper  
Kraft Paper  
White Paper

**GSM :** 350

**Shape :** Square & Rectangular

**No of Chocolate :** 08 pcs  
12 pcs



## BROWNIE BOX

### Specifications :

**Paper :** Golden Laminated Paper  
Kraft Paper  
White Paper

**GSM :** 350

**Shape :** Square & Rectangular

**No of Brownie :** 01 pcs 02 pcs  
04 pcs 06 pcs  
08 pcs 12 pcs  
18 pcs 24 pcs  
18 pcs



## CAKE BOX

### Specifications :

**Paper :** Golden Laminated Paper  
Kraft Paper  
White Paper

**GSM :** 350

**Shape :** Square

**Capacity :** 0.5 kg. 1 kg.  
2 kg. 3 kg.  
5 kg.



## CUPE CAKE BOX

### Specifications :

**Paper** : Golden Laminated Paper  
Kraft Paper  
White Paper

**GSM** : 350

**Capacity** : 1pcs. 2pcs.  
4pcs. 6pcs.  
12pcs.



## ECO PASTRY BOX



### Specifications :

**Paper** : Kraft Paper **Paper** : White paper

**GSM** : 400 **GSM** : 350

**Shape** : Square

**No of Cupcake** : 1 pcs  
2 pcs  
3 pcs

## CAKE BAG

### Specifications :

**Paper** : Kraft Paper

**GSM** : 400

**Shape** : Square

**Size** : 9 x 9 x 9 ( For 1/2 Kg )  
11 x 11 x 8 ( For 1 Kg )  
13.5 x 10 x 13 ( For 2 Kg )



## CAKE BASE

### Specifications :

**Paper** : Gold Laminated Paper  
**Thickness** : 3 mm  
**Shape** : Round & Square  
**Pattern** : Plain & Flower Shape  
**Size** : 6 x 6    12 x 12  
           7 x 7    14 x 14  
           8 x 8    16 x 16  
           10 x 10



## PASTRY PLACER

### Specifications :

**Paper** : Gold Laminated Paper  
**Thickness** : 1.5 mm  
**Shape** : Triangular  
           Round  
           Square  
           Rectangular



## MACARON BOX

### Specifications :

**Paper** : Golden Laminated paper  
           Kraft Paper  
           White Paper  
**GSM** : 350  
**No of Macaron** : 3 macaron  
                       6 macaron



## SWEET BOX With Window

### Specifications :

**Paper** : Golden Laminated paper  
           Kraft Paper  
           White Paper  
**Shape** : Square with window  
**Capacity** : 250 gm  
               500 gm



## BAKING CUP

### OBLONG BAKING CUP

Size : L x W x H (mm)  
65 x 23 x 24  
Material : White Paper



### ROUND BAKING CUP

Size : Base X Height (mm)  
44 x 28  
Material : White Paper



### ROUND BAKING CUP

Size : Base X Height (mm)  
44 x 26  
Material : White Paper



## CAKE MOULDS



### PLUM CAKE MOULDS



### BROWNIE CAKE MOULDS





## SQUARE BAKING CUP



## CURL CUPS FOR MUFFIN



### Specifications :

**Design** : Polka Dots printing  
**Color** : Yellow, Red, Green, Pink,  
Sky Blue, Brown, Blue, White

## BAR CAKE MOULDS

### Specifications :

**Color** : Red, Yellow, Green, Dark Brown, white





## BAKEABLE MUFFIN CUP



## MUFFIN TRAY



## BURGER BOX



### Specifications :

**Paper** : Kraft Paper  
White Paper  
**Weight** : 4 x 4 x 3.5  
4.5 x 4.5 x 3.5

## SANDWICH BOX

### Specifications :

**Paper** : Kraft Paper  
White Paper  
**Shape** : Triangular Sandwich box  
Square Box



## PAPER CONTAINER

### Specifications :

**Paper** : Kraft Paper  
White Paper  
**Capacity** : 250 , 350 , 500  
750, 1000 ml



## PAPER CONTAINER TRAY

### Specifications :

**Compartment** : 2 Container Tray  
4 Container Tray



## PAPER TRAY WITH COMPARTMENT

### Specifications :

**Capacity** : 600 , 700 , 900 , 1000 ,  
1200 , 1400 , 1600 ,  
2100 ml



## PAPER TAKE AWAY FOOD BOX

### Specifications :

**Capacity** : 500 , 700 , 800 , 1200 ,  
1600 , 2000 , 2100 ml



## PAPER SALAD BOWL

### Specifications :

**Capacity** : 500 , 750 ,  
1000 , 1300 ml



## ALUMINIUM FOIL LAMINATED PAPER BOWL

### Specifications :

**Capacity** : 750 , 1000 ,  
1300 ml



## NOODLE BOX

### Specifications :

Capacity : 250 , 350 , 500 , 710 , 950 ml



## PAPER FOOD TRAY

### Specifications :

**Paper :** Kraft Paper With Lid  
White Paper With Lid  
**Capacity :** 1 , 2 , 4 , 10 , 23 OZ



## FRENCH FRIES BOX

### Specifications :

**Paper :** White Paper  
Kraft Paper  
**Size :** Small  
Medium  
Large



## PIZZA BOX



### Specifications :

**Paper :** White Paper

Kraft Paper

**Size :** 5 x 5 x 1.5      6 x 6 x 1.5  
 7 x 7 x 1.5      8 x 8 x 1.5  
 9 x 9 x 1.5      10 x 10 x 1.5  
 11 x 11 x 1.5      12 x 12 x 1.75  
 13 x 13 x 1.75      14 x 14 x 1.75  
 15 x 15 x 1.75      16 x 16 x 1.75  
 17 x 17 x 1.75      18 x 18 x 1.75

## POPCORN BOX

### Specifications :

**Paper :** White Paper

**GSM :** 300

**Size :** Small  
 Medium  
 Large



## RECTANGULAR ROLLBOX

### Specifications :

**Paper :** Kraft Paper

White Paper

**GSM :** 300

**Shape :** Rectangular



## FOOD WRAPPING PAPER ROLL & SHEET



### Specifications :

**Paper :** Kraft Butter Paper

White Butter Paper

Printed Butter Paper

**Size :** 12" x 15"  
 23" x 36"  
 10" x 10"  
 20" x 30"

## PAPER CUP & HOLDER TRAY



### Specifications :

Capacity : 130 , 180 , 250 ,  
300 , 360 ml

## PAPER TEA FLASK

### Specifications :

**Paper** : Kraft Paper  
**Shape** : White Tea Flask  
with handle &  
without handle  
**Capacity** : 250 ml  
500 ml  
750 ml  
1000 ml



www.gujaratshopee.com

## STAND-UP POUCHES

Both Side Silver Stand  
Up Pouch



One Side Silver One Side  
Transparent Stand Up Pouch



Oval Window  
Stand Up Pouch





## STAND-UP POUCHES

One Side Transparent One Side Colour Stand Up Pouch



Both Side Color Stand Up Pouch



One Side Kraft Paper One Side Transparent Zip Pouch



Clear Silver Foil Zip lock Side Gusset Stand Up Pouch



Rectangle Window Stand Up Pouch (Matt Lamination)



White Window Stand Up Pouch



Diamond Shape Zipper Stand Up Pouch With Valve



## STAND-UP POUCHES

### Colour Stand up Zipper Pouch with Oval Window

Size (Inch)	Dry Fruits	Grains
4 x 6 x 1.25	100 gm	200 gm
5.5 x 8 x 1.5	250 gm	500 gm
6.5 x 10 x 2	500 gm	1000 gm

### One Side Silver Standup Zipper Pouch

Size (Inch)	Dry Fruits	Grains
3.5 * 5 * 1	50 gm	100 gm
4 x 6 x 1.25	100 gm	200 gm
5.5 x 8 x 1.5	250 gm	500 gm
6.5 x 10 x 2	500 gm	1000 gm
7 x 10 x 2	500 gm	1000 gm
8 x 12 x 2.5	1000 gm	2000 gm

### Transparent Standup Zipper Pouch Sizes

Size (Inch)	Dry Fruits	Grains
3.5 * 5 * 1	50 gm	100 gm
4 x 6 x 1.25	100 gm	200 gm
4.5 x 8 x 1.5	150 gm	250/300 gm
5.5 x 8 x 1.5	250 gm	500 gm
6.5 x 10 x 2	500 gm	1000 gm
7 x 10 x 2	500 gm	1000 gm
8 x 12 x 2.5	1000 gm	2000 gm
9 x 13 x 2.25	1000 gm	2000 gm

## 3 SIDE SEALED POUCH



## BOTTLE SHAPE POUCHES

### FRUIT SHAPE POUCH (TRANSPARENT)

**Specifications :**

Capacity : 60 , 100 ml



### LOLLY STICK POUCH (MILKY WHITE - MIX FLAVOR)

**Specifications :**

Capacity : 60 , 100 ml



### BOTTLE SHAPE POUCH (TRANSPARENT)

**Specifications :**

Capacity : 100 , 125 , 150 , 200 ml



### BOTTLE SHAPE POUCH (MILKY WHITE)

**Specifications :**

Capacity : 100 , 125 , 150 ml



## PAPER GROCERY BAG ( FOOD GRADE & RECYCLE)

**Specifications :**

**Grocery Paper Bag**

**Paper** : Kraft Paper  
White Paper

**Shape** : Square Bottom, V Shape Bottom

**Size** : Small



## PAPER STRAW

### SINGLE COLOR PRINTED PAPER STRAW

#### Specifications :

Size : 6 MM X 197 MM    8 MM X 197 MM  
10 MM X 197 MM    12 MM X 197 MM



### SINGLE COLOR PRINTED PAPER STRAW (POLKA DOTS DESIGN)

#### Specifications :

Size : 6 MM X 197 MM    8 MM X 197 MM  
10 MM X 197 MM    12 MM X 197 MM



### PLAIN PAPER STRAW

#### Specifications :

Size : 6 MM X 197 MM  
8 MM X 197 MM  
10 MM X 197 MM



### PRINTED PAPER STRAW

#### Specifications :

Size : 6 MM X 197 MM  
8 MM X 197 MM  
10 MM X 197 MM





## FANCY PAPER BAG WITH WINDOW



### Specifications :

**Paper** : Kraft Paper  
White Paper  
**Size** : Small  
Medium  
Large

## CARRY BAG





## PAPER TRAY



PLAIN TRAY

**Specifications :**

**Paper** : White Paper

**Size** : 102 x 152 x 38 mm



TACO TRAY

**Specifications :**

**Paper** : White Printed Paper

**Size** : 195 x 91 x 54 mm



HOT DOG TRAY

**Specifications :**

**Paper** : White Printed Paper

**Size** : 190 x 85 x 45 mm



PASTRY TRAY

**Specifications :**

**Paper** : White Color Printed

**Size** : 110 x 80 x 30 mm



PLUM CAKE TRY

**Specifications :**

**Paper** : White Color Printed

**Size** : 120 x 120 x 40 mm



PLUM CAKE TRY

**Specifications :**

**Paper** : Red Color Printed

**Size** : 120 x 120 x 40 mm



BUTTER CUP TRY

**Specifications :**

**Paper** : White Printed

**Size** : 30 x 30 x 40 mm



BUTTER CUP TRY

**Specifications :**

**Paper** : White Color Printed

**Size** : 117 x 80 x 46 mm



SMALL CREPE BOX

**Specifications :**

**Paper** : White Duplex Paper  
Self-Locking

**GSM** : 260

**Size** : 120 x 120 x 40 mm

## ALUMINIUM FOIL CONTAINER



### Specifications :

Capacity : 250 ml  
450 ml  
660 ml  
750 ml

### Specifications :

3 Compartment Meal Tray



### Specifications :

Capacity : 600 ml



## FOOD WRAPPING PVC & PE CLING FILM

### Specifications :

**PVC** Cling Film

Length : 100 mtr  
250 mtr  
275 mtr  
300 mtr  
500 mtr



## ALUMINUM FOIL ROLL



### Specifications :

Capacity : 250 ml  
450 ml  
660 ml  
750 ml

72 No.  
1 kg net  
1 kg across

## PLASTIC FOOD CONTAINER



### PLASTIC ROUND CONTAINER

#### Specifications :

Capacity : 50 ml 600 ml 1200 ml  
100 ml 750 ml 1500 ml  
250 ml 1000 ml

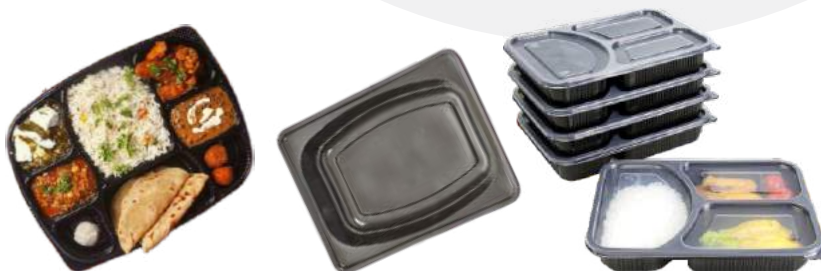


### PLASTIC RECTANGULAR CONTAINER

#### Specifications :

Capacity : 500 ml 1000 ml  
600 ml 1500 ml  
750 ml

## DISPOSABLE MEAL TRAY & PASTA TRAY



### Specifications :

#### No of

Compartment : 2 Compartment  
3 Compartment  
4 Compartment  
5 Compartment  
8 Compartment

## GLASS JAR & BOTTLE



GLASS JAR WITH LID

**Specifications :**

**Capacity :** 125 ml

**Lid Color :** Black - Gold



WIDE MOUTH SHORT HEIGHT GLASS JAR WITH LID

**Specifications :**

**Capacity :** 200 ml

**Lid Color :** Black - Gold



SQUARE GLASS JAR WITH LID

**Specifications :**

**Capacity :** 250 ml

**Lid Color :** Black - Gold



SHORT HEIGHT GLASS JAR WITH LID

**Specifications :**

**Capacity :** 350 ml

**Lid Color :** Black - Gold



HONEY STYLE SQUARE GLASS JAR WITH LID

**Specifications :**

**Capacity :** 400 ml

**Lid Color :** Black - Gold



HONEY STYLE GLASS JAR WITH LID

**Specifications :**

**Capacity :** 400 ml

**Lid Color :** Black - Gold

## GLASS JAR & BOTTLE



ROUND MINI GLASS JAR WITH LID

**Specifications :**

**Capacity** : 33 ml

**Lid Color** : Black - Gold



ROUND MINI GLASS JAR WITH LID

**Specifications :**

**Capacity** : 43 ml

**Lid Color** : Black - Gold



HEXAGONAL GLASS JAR WITH LID

**Specifications :**

**Capacity** : 45 ml

**Lid Color** : Black - Gold



CROWN GLASS JAR WITH LID

**Specifications :**

**Capacity** : 120 ml

**Lid Color** : Black - Gold



HEXAGONAL GLASS JAR WITH LID

**Specifications :**

**Capacity** : 200 ml

**Lid Color** : Black - Gold



HEXAGONAL GLASS JAR WITH LID

**Specifications :**

**Capacity** : 250 ml

**Lid Color** : Black - Gold



## GLASS JAR & BOTTLE



GLASS JAR WITH LID

**Specifications :**

**Capacity :** 1000 ml

**Lid Color :** Black - Gold



SOS GLASS BOTTLE WITH LID

**Specifications :**

**Capacity :** 200 ml

**Lid Color :** Black - Gold



ROUND MILKSHAKE/ JUICE BOTTLE WITH LID

**Specifications :**

**Capacity :** 200 ml

**Lid Color :** Black - Gold



ROUND MILKSHAKE/ JUICE BOTTLE WITH LID

**Specifications :**

**Capacity :** 300 ml

**Lid Color :** Black - Gold



ROUND MILKSHAKE/ JUICE BOTTLE WITH LID

**Specifications :**

**Capacity :** 500 ml

**Lid Color :** Black - Gold



500 ML GLASS BOTTLE WITH SS LID

**Specifications :**

**Capacity :** 500 ml

**Lid Color :** Black - Gold

## PP CUTLERY

GLASS JAR WITH LID



FRENCH CAKE FORK



ICE CREAM SPORK



COLOR PP SPORK



LEAF SPOON



PP KNIFE



TRIANGLE CAKE SERVER



SUNDAE PP SPOON



PP FORK



PP SPOON



FRENCH CAKE KNIFE



TWIST FORK



BEAR SPOON



## WOODEN CUTLERY

ICE-CREAM / DESSERT SPOON

**Specifications :**

Size : 75 mm



WOODEN PAWDA SPOON

**Specifications :**

Size : 95 mm



WOODEN SPOON

**Specifications :**

Size : 110 , 140 , 160 mm



WOODEN FORK

**Specifications :**

Size : 140 , 160 mm



WOODEN KNIFE

**Specifications :**

Size : 140 , 160 mm



WOODEN SPORK

**Specifications :**

Size : 100 , 160 mm



WOODEN ROUND SPOON

**Specifications :**

Size : 100 mm



WINE STIRRER

**Specifications :**

Size : 140 , 160 mm



COFFEE STIRRER

**Specifications :**

Size : 110 , 140 mm



## WOODEN CUTLERY

### ICE-CREAM STICK

**Specifications :**

**Size :** 114 mm



### WOODEN FRUIT FORK

**Specifications :**

**Size :** 3.5 inch



### WOODEN COCKTAIL STIRRER

**Specifications :**

**Size :** 6 , 8 inch



### WOODEN SKEWERS

**Specifications :**

**Size :** 6 , 8 , 12 , 16 inch



### WOODEN GUN SKEWER

**Specifications :**

**Size :** 9 , 12 , 15 cm



### WOODEN CHOP STICK

**Specifications :**

**Size :** 8 inch





### Specifications :

Made from Areca Leaf  
100% Natural and Biodegradable  
Non-toxic and Compostable  
Microwave safe and Freezer safe



## ARECA LEAF DISPOSABLE TABLEWARE

### Specifications :

Sr	Product Name	Sizes
1	Round Plate	6/ 7/ 8/ 10/ 12 inch
2	Square Plate	6x6/ 6.5x6.5/ 7x7/ 8x8/ 9x9/ 10x10 inch
3	Rectangular Plate	6x4/ 6x5/ 9x6/ 10x4 inch
4	Square Deep Plate	9.5 x 9.5 Inch
5	Areca Spoon	1.4 Inch
6	Round Deep Bowl	7 inch
7	Round Bowl	3.5/ 4/ 4.5/ 5 inch
8	Square Deep Bowl	5.5 Inch
9	Square Bowl	3x3/ 4x4/ 5x5 inch
10	Heart Shape Bowl	5/ 6 inch
11	Boat Shape Plate	6/ 8 inch
12	3 Compartment Round Plate	10 Inch
13	4 Compartment Round Plate	10/12 inch
14	3 Compartment Square Plate	10 x 10 inch



## BAGASSE PRODUCT

### BAGASSE BOWL

#### Specifications :

Size : 120 , 180 , 250 mm



### BAGASSE PLATE

#### Specifications :

Size : 5 , 7 , 9 , 11 inch



### RECTANGLE BAGASSE CONTAINER & LID

#### Specifications :

Size : 500 , 750 , ml



### RAILWAY BAGASSE TRAY

#### Specifications :

3 Compartment



### BAGASSE TRAY & LID

#### Specifications :

4 Compartment



### BAGASSE TRAY & LID

#### Specifications :

5 Compartment



### BAGASSE TRAY & LID

#### Specifications :

8 Compartment



## WHEAT STRAW PRODUCTS

### WHEAT STRAW BOWL

#### Specifications :

Size : 350 , 460 , 500 ,  
680 , 850 ml



### WHEAT STRAW PLATE

#### Specifications :

Size : 6 , 7 , 8 , 9 , 10 inch



### WHEAT STRAW PLATE

#### Specifications :

**3 Compartment**  
Size : 10 Inch



### WHEAT STRAW OVAL PLATE

#### Specifications :

Size : 233 X 165 X 22 mm



### WHEAT STRAW OVAL PLATE

#### Specifications :

Size : 263 X 199 X 20 mm



### WHEAT STRAW OVAL PLATE

#### Specifications :

Size : 318 X 255 X 22 mm



### WHEAT STRAW PLATE

#### Specifications :

**5 Compartment**



### WHEAT STRAW TRAY

#### Specifications :

Size : 350 ml



### WHEAT STRAW BOX

#### Specifications :

Size : 600 ml





## WHEAT STRAW PRODUCTS

WHEAT STRAW BOX

**Specifications :**

**2 Compartment**

**Size : 1000 ml**



WHEAT STRAW  
TAKEAWAY BOX WITH LID

**Specifications :**

**2 Compartment**

**Size : 1000 ml**



WHEAT STRAW  
TAKEAWAY BOX WITH LID

**Specifications :**

**Size : 1000 ml**



WHEAT STRAW BOX

**Specifications :**

**3 Compartment**

**Size : 8 , 10 Inch**



WHEAT STRAW BOX

**Specifications :**

**Size : 8 Inch**



WHEAT STRAW BURGER BOX

**Specifications :**

**Size : 450 ml**



## BAGASSE PRODUCT

Sugarcane Bagasse products are 100% biodegradable & compostable  
Microwave and freezer safe  
100% non-toxic, water & oil proof





**INDUSTRIAL PACKAGING MATERIAL**



**PAPER PACKAGING RAW MATERIAL**

*E Commerce  
Packaging Material*



*Material Handling*



**BIO-DEGRADABLE PRODUCTS**



**HOUSEHOLD &  
KITCHENWARE PRODUCTS**



**DINING & KITCHEN PRODUCTS**



**INDUSTRIAL AND PROFESSIONAL DISPOSABLES**

**Note :** Customize logo and Printing available in any products

## CUSTOM PRINTED BOXES

*Any Customized Logo , Printing , Design Possible*



*"Enhance Value of Your Product with Excellent Packing"*

### GUJARAT PACKAGING INDUSTRIES

235, 2nd Floor, Fortune Gold Building,  
Near Murlidhar Weigh Bridge  
Kishan Gate , G.I.D.C Metoda  
360021. Rajkot. (Gujarat) INDIA

✉ info@gujaratshopee.com  
☎ 02827 287677  
☎ Toll-Free : 1800 123 8911

[www.gujaratshopee.com](http://www.gujaratshopee.com)



☎ Toll Free : 1800 123 8911



*Excellence In Packaging*



"Serving All Packaging Needs Under One Roof"

# COMPANY PROFILE

**Gujarat Shopee** is the well known brand of Gujarat Packaging Industries. We are one of the largest manufacturer of Corrugated Boxes, Rolls & Sheets since 2006.

For Our valuable customers we are upcoming with a vast range of all packaging materials. With dedicated and knowledgeable service teams, we work with our customer partners to combine deep insights about Packaging and consumer trends with fast and flexible manufacturing to drive higher levels of responsiveness and value with our highly equipped product testing laboratory.

Our proven process infuses rapid innovation at every level that encompass all six areas of packaging value :



## CORE VALUE

  
**Quality Assurance**

  
**Customer Satisfaction**

  
**Ethical Business**



### VISION

Company is driven by its commitment of Quality.



### MISSION

Aim to be Global Leader in Packaging Industries.

# PRODUCTS WE SERVE

“Committed for Quality”



**Corrugated  
Box / Sheet / Roll**



**Mono  
Box**



**LD / HM / PP / BOPP  
Bag**



**Zip Lock  
Bag**



**Courier / Security  
Bag**



**HDPE / BOPP / PP  
Woven Sack**



**BOPP Adhesive  
Tape**



**Pet / PP  
Strap**



**LLDPE / PVC Stretch  
Film**



**PVC / LD Shrink  
Film**



**Air Bubble  
Roll / Bag**



**Dunnage Air  
Bag**



**Wooden / Plastic /  
Corrugated Pallet**



**Plastic  
Crates**



**Stand Up  
Pouch**



**Paper  
Cone**

# PRODUCTS

## CORRUGATED

### BOXES / SHEET / ROLL



We offer a wide range of corrugated boxes. Which are light weight, recyclable and strong enough to store and ship a variety of products.

#### Customize Product Available in :

- All dimensions and sizes.
- Paper BF - 12 to 35.
- Paper GSM - 80 to 350.
- Ply - 3,5,7,9 and 11.
- Printing Facility - As per Requirement.

**Corrugated Sheet** - Customize size with 3, 5, 7, 9, 11 Ply

**Corrugated Roll** - As per Requirement.

Useful in the packaging of light weighted product. Printed in attractive designs and colors gives a unique brand identity.

#### Suitable for Packing of :

- Food and Beverages
- Pharmaceuticals and cosmetics etc.
- Jewellery and Garments

#### Available In :

- Varied Sizes, Thickness, Prints & Colors.

## MONO BOXES



## BOPP ADHESIVE TAPE



With very good strength and adhesiveness tape can easily sticks on all types of Surface (like Plastic, Wood, Glass, Fiber, Metal, etc.)

#### Specifications :

- **Length** - 30 to 1000 (Mtr.)
- **Width** - 0.5" to 4" (Inch)
- **Micron** - 36 / 38 / 40 / 43 / 45 / 50
- **Colors** - Transparent, Brown & Multifarious.
- **Printing** - Customized on specific quantum.
- **Application** - Industrial & Personal Use.



## LLDPE / PVC STRETCH FILM



Highly stretchable and Elastic recovery keeps the items tightly bound.

High Utility Plastic Stretch Film perfect for wrapping and Packing Applications.

### Manual & Machine Grade :

- **Width** - 3" to 24" (Inch)
- **Micron** - 10 to 29
- **Colors** - Transparent, Plain & Printed.

## AIR BUBBLE ROLL

Ultimate alternate for wrapping and packing Products / material which are not too much delegated or protective. Also useful when product has too big size to pack in box.

### Such as :

- Glass products & Handicraft Items
- Engineering equipments
- Furniture and fixture
- Made of two / three layers of LDPE Sheets
- Lengths & thickness - customized



## LD / PVC SHRINK FILM

High clearance & Shrinkage.



Useful in packaging of - Automobile parts, boxes, pharmaceutical products, stationery accessories and electrical parts.

### Specifications :

- **Thickness** - 25 to 100 Micron.
- **Length** - Standard size will be avail on requirement.
- **Width** - Up to 760 mm (tube width - 390mm to 780mm)
- **Shrinkage** - Up to 50% Crystal clear transparent with glossy Surface finish.)
- **Density** - 1.38gm/cc

# PRODUCTS

## PP / PET STRAPS



Fully automatic machine & semi automatic machine grade.

### Specifications :

- **Types** - Smooth (Plain) and Embossed.
- **Width** - 9 to 32 mm.
- **Thickness** - 0.4 to 1.27 mm.
- **Length** - Propose Net.

Plastic bags are made from different material & each of these materials offers users specific characteristics with various mixed shapes & colors and many versions out there choose the right bag for your specific needs.

### Specification :

- HM/LD/BOPP/PP Bags in all sizes and custom colors as well as printing.
- Bright Finished Products with high Elastic Strength.
- High Resistance to Puncturing and Tearing.
- Side/bottom gusset type available.
- BOPP Bag : with superior quality, clarity, transparency, high tensile strength, and durability.
- Flap open/lock type available.

## PP / HM / LD / BOPP BAGS



## ZIP LOCK BAGS



Useful to seal standard weight products and shipping and store parts, clothing, food.

### Specifications :

- **Size** - 2"x2" to 16"x16"
- **Gauge** - 160 to 400
- Pure virgin made from low density
- Can be Recycled.

# PRODUCTS



## AIR BUBBLE POUCH



### Specifications :

- **Size** - All standard sizes.
- **Guage** - 175 to 800
- **Layer** - 1 layer, 2 layers, 3 layers
- **Usage** - To protect any item in transit packaging  
- for cushioning lightweight, medium weight  
or heavy weight products.

### Specifications :

- **Material** - Poly Laminated Pouches
- Air Tight, Water Proof
- Available in all standard size
- **Colour** - Silver and Transparent
- **Usage** - Ideal for Packing of Pickles, Food Industries,  
Pharma Industries, Dry Fruits.

## STAND UP POUCH



www.gujaratshopee.com

## HDPE/BOPP/PP WOVEN BAGS



- **Dimensions** - As per your requirement.
- **Color, Printing and Lamination** - Customize.
- **Storage Capacity** - 10 to 60 kgs.
- **Uses / Application** -  
Fertilizers, Seeds, Food, Grains, Sugar, Rice,  
Animal Feeds.

### Specifications :

- Dustbin bag / Bin bag / Trash bag
- **Material** - Plastic
- **Sizes** - All sizes available.
- **Color** - Any Color.
- Side gadgets
- **Thickness** - 10 to 80 Micron.

## GARBAGE BAGS



# PRODUCTS

## COURIER / SECURITY BAGS

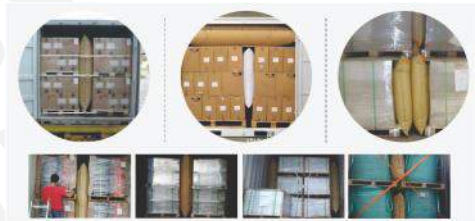


- Mainly useful in E-Commerce Packaging
- Fully customized available in all standard
- Dimensions
- Thickness
- Color and print

Dunnage Air Bag can protect cargoes effectively during most types of cargo.

Widely used as padding material & securing products, supplying reliable protection on in-transit cargoes to avoid cargoes damages which could be occurred anywhere, anytime.

## DUNNAGE AIR BAG



## PAPER BAGS



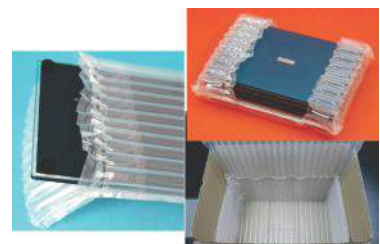
### Specifications :

- **Size** : Customize (LxWxH)
- **Colour** : Any Colour
- **Printing** : As per customer requirements
- **Craft** : White or Brown
- **Handle** : With or Without

### Specifications :

- Air column cushion bag can not break when receive high pressure after inflating and it can available absorb shock and reduce the impact of outside force
- Waterproof, Good penetration-resistant and able to bear high or low temperature characteristics.

## AIR COLUMN BAGS



# PRODUCTS



## PALLETS



**Pallets** - Pallet is an elevated platform, designed for storing & handling of materials for heavy, medium & light weight applications.

- **Material** - 1. Corrugated 2. Plastic 3. Wooden

Customize products available in All standard design, shape and size.

## PLASTIC CRATES

Having long life plastic crates Made from HDPE Material are useful in many industrial applications

- **Like** - Handling, storage and moving material.
- **Application** - Vegetable and food, Dairy, Industrial use.  
Available in All standard sizes and specifications.



## PAPER CONE



### Specifications :

- **Material** - Paper
- **Colour** - Brown
- Excellent strength and good finishing
- **Size** : 4 x 20
- **Usage** - Spinning Mill

### Specifications :

- **Material** - Paper
- **Size** : All standard sizes.
- Resistant to high temperature
- Fine finish
- Breakage resistance

## PAPER CORE





# PRODUCTS

## CRAFT PAPER



### Specifications :

- **Size :** All standard sizes.
- **GSM :** 80, 90, 100, 120, 140, 150, 180, 200, 220, 250, 300.
- **BF :** 12 to 35

### Specifications :

- Also known as : Solid Paper Edge Protector / Angle Bar
- **Size :** Customized (LxWxHxTHICKNESS)
- **Uses :** To cover and protect the side / edge of fragile items like paper, plastic, glass and other expensive materials from damages cause during shipping or packaging.
- **Colour :** Brown (Natural)  
Customized colour will be available on specific quantum order

## EDGE PROTECTOR (Corrugated Edge Protector)



## PACKING TOOLS

### TAPE Dispenser



### HAND SEALING TOOLS STRAPPING TOOLS FOR PET/PP STRAP

### STRETCH WRAP DISPENSER



## OUR ESTEEMED CLIENTS

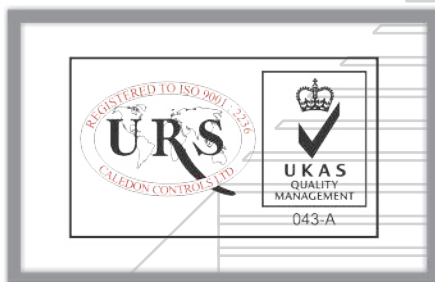


Garments



Any Many More...

## OUR CREDENTIALS





*Excellence In Packaging*

“ Enhance Value of Your Product with Excellent Packing ”

## CONTACT US

### GUJARAT SHOPEE

#### Registered Office Address

235 - 2nd Floor, Fortune Gold Building,  
Near Murlidhar Weigh Bridge,  
Kishan Gate, GIDC Metoda - 360021.  
Rajkot, Gujarat, India.

### GUJARAT PACKAGING INDUSTRIES

#### Factory Address

Plot No. G-2785/86, I/2 Road,  
Opposite Almighty Agro Products,  
GIDC Metoda - 360021  
Rajkot, Gujarat, India.

✉ [sales@gujaratshopee.com](mailto:sales@gujaratshopee.com)

☎ Toll Free : 1800123 8911

[www.gujaratshopee.com](http://www.gujaratshopee.com)